

# Product Data

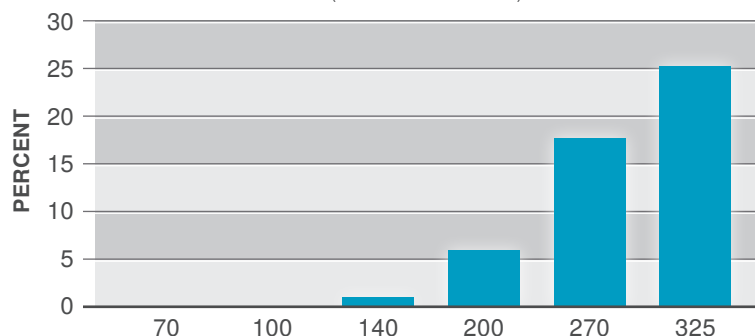


## SIL-CO-SIL® 106

### GROUND SILICA

PLANT: OTTAWA, ILLINOIS

**TYPICAL VALUES**  
(% CUM RETENTION)



**U.S.A. SIEVE ANALYSIS**

USA STD SIEVE SIZE		TYPICAL VALUES		
MESH	MICRONS	% RETAINED		% PASSING
		INDIVIDUAL	CUMULATIVE	CUMULATIVE
70	212	0.0	0.0	100.0
100	150	0.0	0.0	100.0
140	106	1.0	1.0	99.0
200	75	4.9	5.9	94.1
270	53	11.7	17.9	82.4
325	45	7.5	25.1	74.9

### TYPICAL PHYSICAL PROPERTIES

Hardness (Mohs)	7
Melting Point (Degrees F)	3100
Mineral	Quartz
pH	7
Reflectance (%)	79.5
Yellowness Index	4
Specific Gravity	2.65

### TYPICAL CHEMICAL ANALYSIS, %

SiO <sub>2</sub> (Silicon Dioxide)	99.7
Fe <sub>2</sub> O <sub>3</sub> (Iron Oxide)	0.021
Al <sub>2</sub> O <sub>3</sub> (Aluminum Oxide)	0.12
TiO <sub>2</sub> (Titanium Dioxide)	0.009
CaO (Calcium Oxide)	0.009
MgO (Magnesium Oxide)	<0.01
Na <sub>2</sub> O (Sodium Oxide)	<0.01
K <sub>2</sub> O (Potassium Oxide)	0.02
LOI (Loss On Ignition)	0.1

April 27, 2010

### U.S. Silica Company

8490 Progress Drive, Suite 300  
Frederick, MD 21701

(301) 682-0600 (phone)

(800) 243-7500 (toll-free)

[ussilica.com](http://ussilica.com)

**DISCLAIMER:** The information set forth in this Product Data Sheet represents typical properties of the product described; the information and the typical values are not specifications. U.S. Silica Company makes no representation or warranty concerning the Products, expressed or implied, by this Product Data Sheet.

**WARNING:** The product contains crystalline silica – quartz, which can cause silicosis (an occupational lung disease) and lung cancer. For detailed information on the potential health effect of crystalline silica - quartz, see the U.S. Silica Company Material Safety Data Sheet.